



*Downtown
Streetscaping
Proposal*

Prepared for:

City of Daingerfield

Presented by:

C & A Creations, LLC

Table of Contents

Page	Topic
3	Introduction
4	What is Streetscaping and its Benefits?
5-13	Sponsorship opportunities A through I
14	Furnishing & Design Possibilities/Recommendations
15	Design Strategy
16	Adopt-A-Bed
17	Conclusion

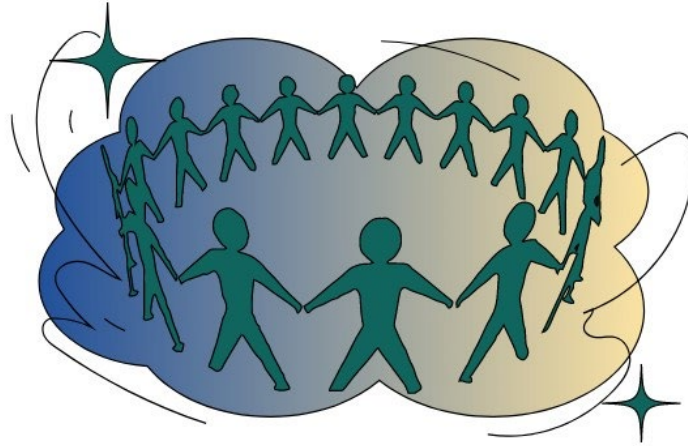
Introduction

The Daingerfield Streetscaping Project allows individuals and organizations to adopt public spaces for renovation and other maintenance activities. Adoptions are great for any group who wants to have a meaningful and positive impact on the environment, including:

- Business
- Neighborhood Groups
- Civic Organizations
- Scouts
- Faith Groups
- Environmental Clubs

Adoptions are 100% voluntary and have no application or annual fees!

This is an opportunity for you to exclusively sponsor and build your business and a healthy active community.



What is Streetscaping and its benefits?

- Aesthetic design improvement
- Pedestrian and bike friendly areas
- Public art opportunities
- Seasonal decoration options
- Support retail and street life
- Significantly lower maintenance cost
- Provides accommodations for local events I.E parades, festivals etc.
- Increases sustainability and economic development.



Sponsorship Opportunity A



Bed Package Location and Contribution Amount

- Traffic Circle & Coffey St
- \$5,030.61

Design Options:

- 6.2 Yards 2' Blue & White River Rock
- 2-6ft Bench
- 1-Trash Can
- 2-Boulder
- 1-Custom Plaque
- 2-Bike Rack

Sponsorship Opportunity

B



Bed Package Location and Contribution Amount

- Traffic Circle North
- \$3,851.46

Design Options:

- 5.1-Yards 2" Blue & White River Rock
- 1-Tree Bench
- 1-Trash Can
- 1-Boulder
- 1-Custom Plaque
- 1-Bike Rack

Sponsorship Opportunity

C



Bed Package Location and Contribution Amount

- Coffey & Scurry St.
- \$4,006.29

Design Options:

- 4.2 Yards 2" Blue & White River Rock
- 1-Tree Bench
- 1-Trash Can
- 3-Boulder
- 1-Custom Plaque
- 1-Bike Rack

Sponsorship Opportunity

D



Bed Package Location and Contribution Amount

- Coffey & Scurry St.
- \$1,991.82

Design Options:

- 1.4 Yards 2" Blue & White River Rock
- 1-6ft Bench
- 2-Boulder
- 1-Custom Plaque

Sponsorship Opportunity

E



Bed Package Location and Contribution Amount

- Coffey & Scurry St.
- \$1,857.63

Design Options:

- .75 Yards 2" Blue & White River Rock
- 1-6ft Bench
- 1-Boulder
- 1-Custom Plaque
- 1-Bike Rack

Sponsorship Opportunity

F



Bed Package Location and Contribution Amount

- Coffey & Scurry St.
- \$3,712.48

Design Options:

- 4.4 Yards 2" Blue & White River Rock
- 1-6ft Bench
- 2-Boulder
- 1-Custom Plaque
- 1-Bike Rack
- 1-Trash Can

Sponsorship Opportunity G



Bed Package Location and Contribution Amount

- Scurry & Lamar St.
- \$1,514.98

Design Options:

- 2 Yards 2" Blue & White River Rock
- 3-Boulder
- 1-Custom Plaque
- 1-Ash Tray/Butt Can

Sponsorship Opportunity

H

SOLD



Bed Package Location and Contribution Amount

- Lamar & Webb St.
- \$1,248.65

Design Options:

- 1- Yards 2" Blue & White River Rock
- 1-Boulder
- 1-Custom Plaque
- 1-Bike Rack

Sponsorship Opportunity I



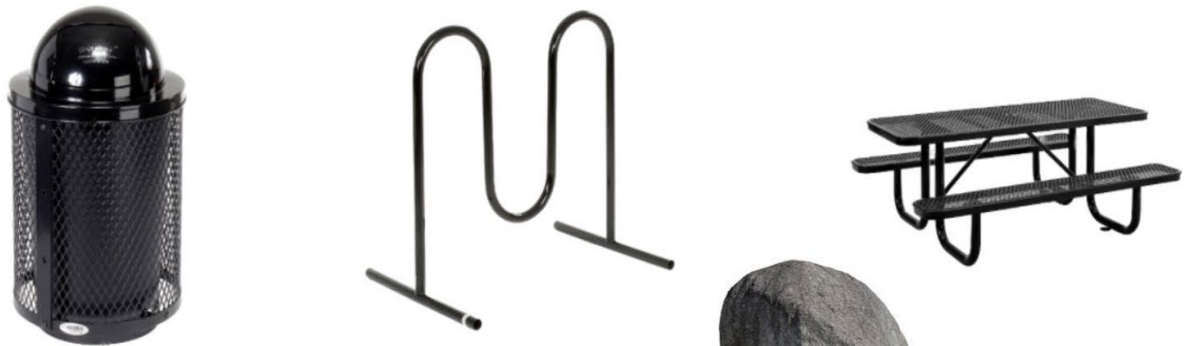
Bed Package Location and Contribution Amount

- 603 Ward St
- \$5,328.67

Design Options:

- 7.2- Yards 2" Blue & White River Rock
- 3-Boulder
- 1-Custom Plaque
- 1-Bike Rack
- 1-Trash Can
- 2-6ft Bench

Furnishing & Design Possibilities / Recommendations



Design Strategy

- Removal of plants
- Removal of all mulch and barriers
- Cap all water lines
- Create 4" deep space within the beds
- Install landscape fabric
- Install blue and white river rock
- Install benches, bike racks, trash cans, seasonal mounts, etc.



Conclusion



A project of this scope needs support from both private citizens and the business community, and we know that many of you would like to be a part of it. To this end, we have defined many levels of gift giving and financial support for tax purposes. Creating streets for people starts with creating a safe, sustainable, and healthy place for residents and visitors to connect, engage, to support the local economy. Truly the front porch of our communities, successful main streets embrace human-scale design and offer seating areas, inviting public spaces, and streetscape amenities that enhance the overall human experience.

Adopt-a-Bed

When you participate in the Daingerfield Adopt-A-Bed Program, you are helping to beautify downtown Daingerfield and make a difference in your community. We will acknowledge a donation with a personalized plaque on a boulder. Multiple donors may contribute through an honorary or memorial fund. Full payment must be received before work can begin. Bed adoptions are fully tax deductible, and payment may be made by check, credit card or cash. Not all beds are available, please first consult City Hall for available beds.

You may submit your proposed inscription for the plaque for approval using the form below. Once the fabricator's proof is approved, it takes approximately eight weeks for the plaque to be produced and installed.

If you are interested in more information, please contact City Hall at 903-645-3906 or 101 Linda Dr. Daingerfield, TX 75638

Thank you for your support!

I would like to adopt bed letter: _____

I am interested in donating to the adopt-a-bed program for \$_____. By submitting this form, I acknowledge that my contribution will be placed into the Adopt-a-bed endowment, the purpose of which is to renovate downtown Daingerfield beds and their environs, and that the City of Daingerfield reserves the right to alter beds temporarily or permanently. I understand that it is my responsibility to update the City of Daingerfield with my current contact information.

Choose one: Brought to you by In Honor of In memory of Sponsored by

Name:	Date:
Address:	
Phone:	Email:
Signature:	

Please make check payable to the City of Daingerfield and send it to Adopt-a-Bed Program, City of Daingerfield, 101 Linda Dr, Tx 75638